



i940



E1025 / E1035



S2040 / S2050 / S2070



S2060w / S2080w



i2900



Scanstation 710 / 730ex



i3200 / i3400



i3250 / i3450



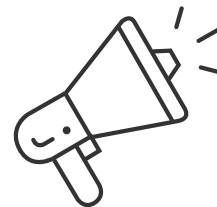
i4250 / i4650 / i4850



i5250 / i5650 / i5850



Accessories

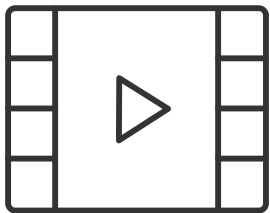


Latest Promotions

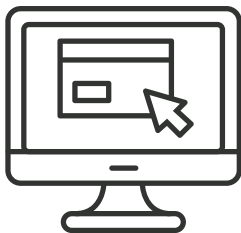


Key features

Speed Colour	15 ppm
Connectivity	USB
Bundled Software	Smart Touch, Alaris Capture Pro LE
Key Feature 1	Perfect Page Technology
Key Feature 2	USB power option
Key Feature 3	PC, Linux and MAC Support
Duty Cycle	1,000
Support Offerings	3 year AUR
Kofax Certified	Yes
Warranty Extended to 5 Years	-
Capture Pro Group A License	-



Watch video



Visit website



Brochure



Presentation

Home

Back to Overview

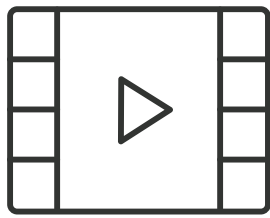
Software

Accessories



Key features

Speed Colour	25/35 ppm colour
Connectivity	USB 3.0
Bundled Software	Smart Touch
Key Feature 1	Smart Touch technology you can perform up to nine different scanning tasks with the push of a button - including creating PDFs.
Key Feature 2	Power on and start scanning in less than 10 seconds.
Key Feature 3	Scan more documents at once with largest feeder capacity in its class
Duty Cycle	3,000/4,000 pages per day
Support Offerings	3 yr AUR next business day
Accessory 1	A4/Legal flatbed accessory
Accessory 2	A3 flatbed accessory
Kofax Certified	Kofax certified
Warranty Extended to 5 Years	-
Capture Pro Group A License	-



Watch video



Visit website



Brochure



Presentation

Home

Back to Overview

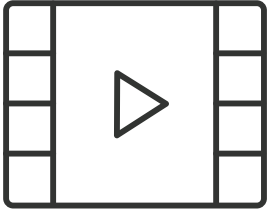
Software

Accessories

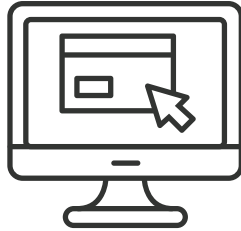


Key features

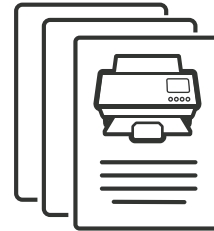
Speed Colour	40/50/70 ppm colour
Connectivity	USB 3.0
Bundled Software	Smart Touch, or Capture Pro LE
Key Feature 1	Embedded Image Processing delivers crisp, high-quality images without depending on your PC.
Key Feature 2	Active Feed technology perfectly aligns pages to avoid misfeeds and multifeeds.
Key Feature 3	Perfect Page optimises image quality on every page for accurate information extraction.
Duty Cycle	5,000/5,000/7,000 pages per day
Support Offerings	3 yr AUR next business day
Accessory 1	Passport scanner accessory
Accessory 2	A3 capable with A3 wallet
Accessory 3	A4/Legal flatbed accessory
Kofax Certified	Kofax certified
Warranty Extended to 5 Years	-
Capture Pro Software	-



Watch video



Visit website



Brochure



Presentation

Home

Back to Overview

Software

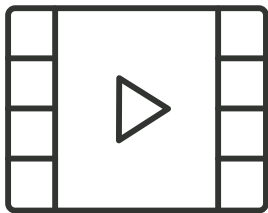
Accessories



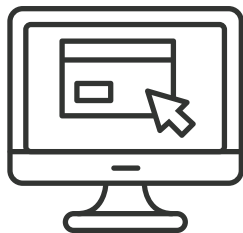
Key features

Speed Colour	60/80 ppm colour
Connectivity	Wireless/Ethernet/USB 3.0
Bundled Software	Smart Touch, or Capture Pro LE
Key Feature 1	Embedded Image Processing delivers crisp, high-quality images without depending on your PC.
Key Feature 2	Active Feed technology perfectly aligns pages to avoid misfeeds and multifeds.
Key Feature 3	Perfect Page optimises image quality on every page for accurate information extraction.
Duty Cycle	7,000/8,000 pages per day
Support Offerings	3 yr AUR next business day
Accessory 1	Passport scanner accessory
Accessory 2	A3 capable with A3 wallet
Accessory 3	A4/Legal flatbed accessory
Kofax Certified	Kofax certified
Warranty Extended to 5 Years	-
Capture Pro Group A (S2060w)/ B (S2080w) License	-

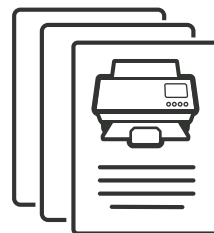




Watch video



Visit website



Brochure



Presentation

Home

Back to Overview

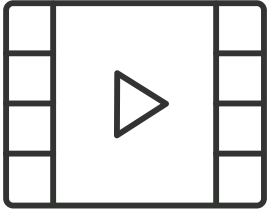
Software

Accessories

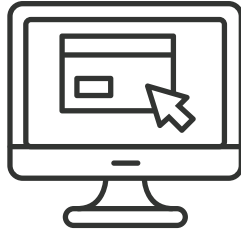


Key features

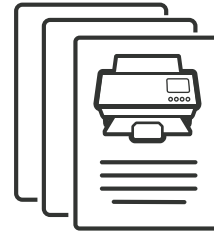
Speed Colour	60 ppm
Connectivity	USB
Bundled Software	Smart Touch, Alaris Capture Pro LE
Key Feature 1	Perfect Page Technology
Key Feature 2	Integrated flatbed for book scanning
Key Feature 3	PC and Linux support
Duty Cycle	10,000
Support Offerings	3 year AUR
Accessory 1	A4/legal flatbed accessory
Accessory 2	A3 flatbed accessory
Accessory 3	Imprinter
Kofax Certified	Yes
Warranty Extended to 5 Years	-
Capture Pro Group B License	-



Watch video



Visit website



Brochure



Presentation

Home

Back to Overview

Software

Accessories



Key features

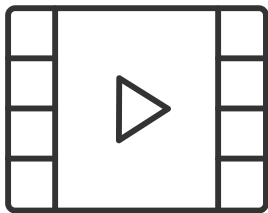
Speed Colour	70 ppm colour
Connectivity	Network only
Bundled Software	Proprietary interface
Key Feature 1	Take processes from multiple steps to a few by connecting the scanner directly to your network.
Key Feature 2	Find the functions you need quickly with a bright, easy-to-navigate touchscreen.
Key Feature 3	Simple remote management allows you to spend less time visiting devices individually and more time on other tasks.
Duty Cycle	6,000 pages per day
Support Offerings	1 yr AUR 4 business days
Accessory 1	A4/Legal flatbed accessory
Accessory 2	A3 flatbed accessory
Accessory 3	Keyboard & Stand accessory
Kofax Certified	Kofax certified

Home

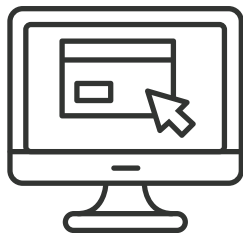
Marketing Materials

Service & Support

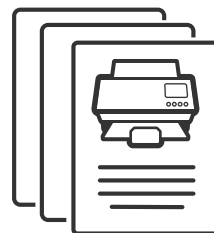
Accessories



Watch video



Visit website



Brochure



Presentation

Home

Back to Overview

Software

Accessories



Key features

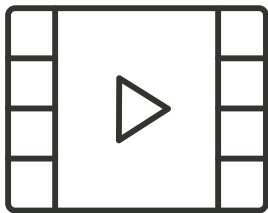
Speed Colour	50/50/90/90 ppm colour
Connectivity	USB 3.0
Bundled Software	Smart Touch, or Capture Pro LE
Key Feature 1	Save space with a robust paper transport and heavy duty features in a compact, desktop-friendly design.
Key Feature 2	Get reliable throughput in colour or black and white, at 200 or 300 dpi.
Key Feature 3	Intelligent Document Protection listens for problems and alerts you before they become jams or misfeeds.
Duty Cycle	15,000/15,000/20,000/20,000 pages per day
Support Offerings	1 yr 3 - 5 days response on-site
Accessory 1	A4/Legal flatbed accessory
Accessory 2	A3 flatbed accessory
Kofax Certified	Kofax certified
Warranty Extended to 5 Years	-
Capture Pro Group C (i3200)/ D (i3400) License	-

Home

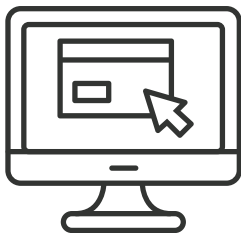
Marketing Materials

Service & Support

Accessories



Watch video



Visit website



Brochure



Presentation

Home

Back to Overview

Software

Accessories



Key features

Speed Colour	50/50/90/90 ppm colour
Connectivity	USB 3.0
Bundled Software	Smart Touch, or Capture Pro LE
Key Feature 1	Save space with a robust paper transport and heavy duty features in a compact, desktop-friendly design.
Key Feature 2	Get reliable throughput in colour or black and white, at 200 or 300 dpi.
Key Feature 3	Intelligent Document Protection listens for problems and alerts you before they become jams or misfeeds.
Duty Cycle	15,000/15,000/20,000/20,000 pages per day
Support Offerings	1 yr 3 - 5 days response on-site
Accessory 1	A4/Legal flatbed accessory
Accessory 2	A3 flatbed accessory
Kofax Certified	Kofax certified
Capture Pro Software	-

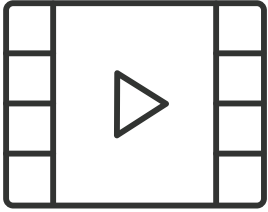
Home

Marketing Materials

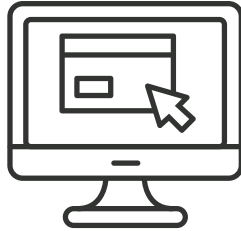
Service & Support

Accessories





Watch video



Visit website



Brochure



Presentation

Home

Back to Overview

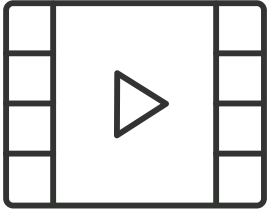
Software

Accessories

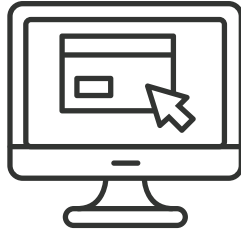


Key features

Speed Colour	110/130/150 ppm
Connectivity	USB
Bundled Software	Smart Touch, Alaris Capture Pro LE
Key Feature 1	Perfect Page Technology
Key Feature 2	Colour LCD Display
Key Feature 3	PC and Linux support
Duty Cycle	65,000/100,000/150,000
Support Offerings	1 year on-site
Accessory 1	A4/legal flatbed accessory
Accessory 2	A3 flatbed accessory
Accessory 3	Imprinter
Kofax Certified	Yes
Warranty Extended to 5 Years	-
Capture Pro Software	-



Watch video



Visit website



Brochure



Presentation

Home

Back to Overview

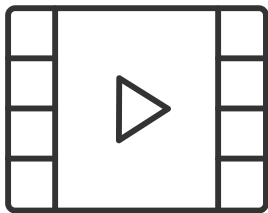
Software

Accessories

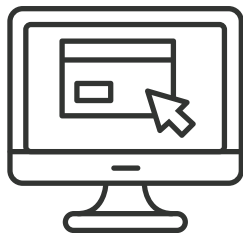


Key features

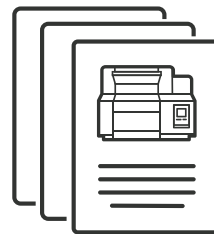
Speed Colour	150/180/210 ppm
Connectivity	USB
Bundled Software	None
Key Feature 1	Perfect Page Technology
Key Feature 2	Touchscreen Colour LCD Display
Key Feature 3	750 Page ADF
Duty Cycle	Unlimited
Support Offerings	1 year on-site
Accessory 1	A4/legal flatbed accessory
Accessory 2	A3 flatbed accessory
Accessory 3	Imprinter
Kofax Certified	Yes
Capture Pro Group E (i5250)/ F (i5650, i5850) License	-



Watch video



Visit website



Brochure



Presentation

Home

Back to Overview

Software

Accessories



Alaris  
Smart Touch

Alaris  
Capture Pro

Watch video







Visit website

Watch video

Visit website

Watch video

Visit website

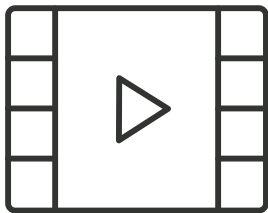
	Flatbeds				Scan station accessories	
						
Model	Dockable S2000 Passport Flatbed	Dockable S2000 A4 Legal Flatbed	USB connected A4 Legal Flatbed	USB connected A3 Flatbed	Keyboard	Stand Accessory
Benefit	Scan two passport pages at once in seconds.	Integrated scanner provides benefit of a flatbed in a smaller footprint.	Connect A4 flatbed easily via USB to scan books, magazines or thicker items etc.	Scan oversized and fragile documents, attach and detach in seconds.	Scan Station with built in computer and touch screen with option of dedicated keyboard.	The stand accessory allows for the keyboard to be positioned just below the scanner screen.
Connectivity	Alaris S2000 scanners	Alaris S2000 scanners	All scanners with USB connectivity	All scanners with USB connectivity	Scan Station scanners	Scan Station scanners
RRP	-	-	-	-	-	-
	<ul style="list-style-type: none"> <li>After connecting a Flatbed Accessory as needed, simply place a document on the glass and select "scan" to capture high-quality images.</li> <li>Benefit from all the Perfect Page imaging features and take advantage of the Smart Touch functionality by scanning to file, e-mail, Microsoft SharePoint and other applications with the push of a button.</li> <li>Output single- and multi-page TIFF, JPEG, RTF, BMP, PDF and searchable PDF formats.</li> <li>Supported by TWAIN and ISIS drivers (Linux also supported in some instances).</li> </ul>					

Home

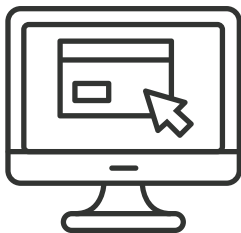
Software

Service & Support

Alaris offers you a single-source advantage for all of your information management service needs. With a focus on your organization's productivity and the ability to increase the proficiency of your staff, Alaris service plans are tailored to maximize your investment for many years to come. Whether for desktop, mission-critical or high-volume solutions, join the thousands of customers who have relied on Alaris document scanner services.



Watch video



Visit website



Scanner support plans



Advance replacement

Home

Software

Accessories



# Alaris

a Kodak Alaris business

The logo for Northamber features a stylized, geometric 'N' composed of several overlapping, angular lines. To the right of this graphic, the word 'NORTHAMBER' is written in a bold, uppercase, sans-serif font.

**NORTHAMBER**

For more details contact the Document Management Team on 020 8296 7010

---