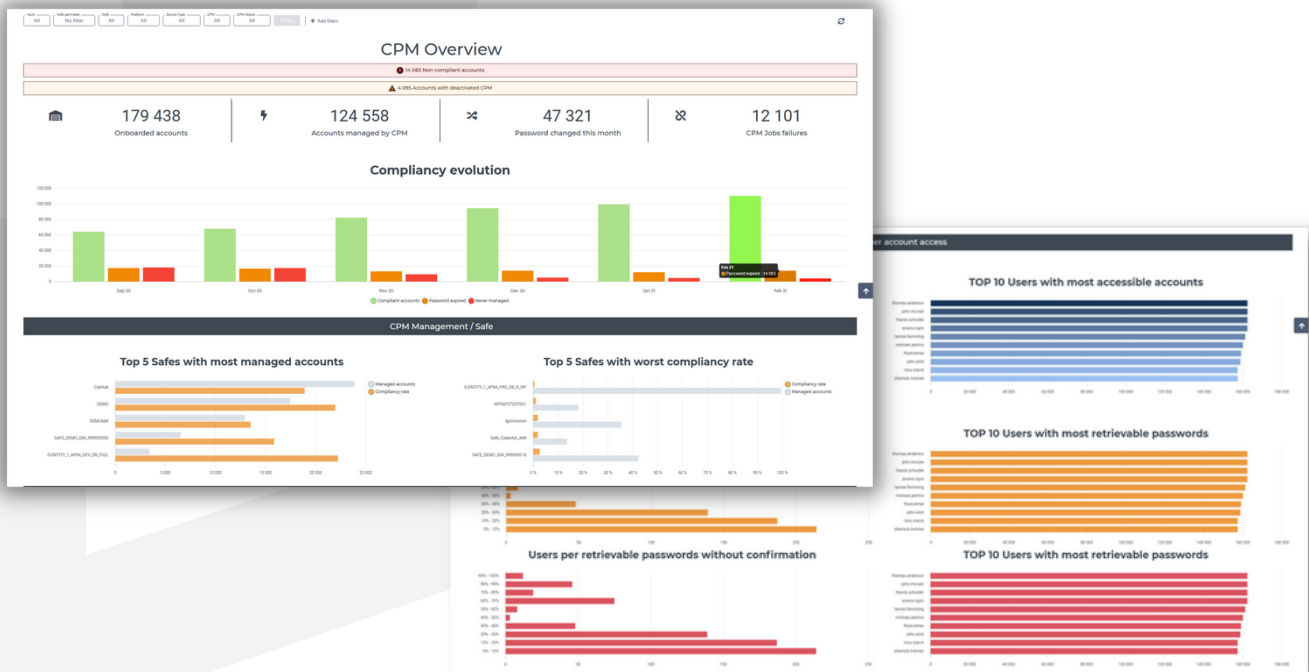


# Ignimission Protec increases the value of your CyberArk solutions

We help PAM managers gain full control over their CyberArk projects. Ignimission Protec accelerates CyberArk adoption and deployment with better control over its scope and budget.

Unlike reporting solutions, we are able to edit data and initiate actions on CyberArk solutions. Ignimission Protec can also be quickly and easily customized to fit the needs of any organization.



## Your PAM project under control with Ignimission Protec

### GOVERNANCE

Quickly visualize the evolution of your onboarding strategy. Our dashboards provide a global view of the scope of your CyberArk project: complete inventories (users, vaults, accounts, accesses), goal tracking, user mapping. Ignimission Protec becomes your main communication tool!

### ONBOARDING

Streamline your onboarding processes by delegating information entry to your internal clients through a self-service module. Requests go through an approval workflow before being sent to CyberArk. By empowering your future key users, you get them involved on a major project!

### PRODUCTION

Manage all your CyberArk instances from Ignimission Protec: move accounts from one vault to another; analyze and handle CPM errors; initiate account and access recertification processes at regular intervals; and correct detected anomalies. Make your CyberArk platform your team's pride!

# IGNISSION PROTEC MAIN FEATURES



## PAM PROJECT MANAGEMENT

- Definition and monitoring of objectives
- KPIs to communicate to upper management
- Global view of controlled elements
- Delegated views by team / group / scope



## CYBERARK ONBOARDING

- Management by perimeter, in the form of a project
- Delegation of entries, control workflows
- Automatic onboarding and repository analysis
- Onboarding reports



## CHANGE MANAGEMENT

- Access test follow-up, cutoff workflow
- Bypass analysis, action follow-up process (audit)



## VAULT-TO-VAULT MIGRATION

- Account migration & access
- Project-based management
- End-to-end managed transfers



## PRODUCTION/EXPLOITATION PHASE

- Details of embedded elements (vault, account, access), filters by teams, groups, perimeters
- Analysis and remediation of CPM errors, follow-up of actions taken
- Analysis of inconsistencies and compliance
- Exposure of APIs to facilitate onboarding from other systems



Ignimission Protec is part of the CyberArk C3 Alliance Partner Program.

Extract from our references

100% renewal rate



## CONTACT-US



**Fabien TEZE**  
Product Owner  
+33 7 67 05 46 28  
fabien.teze@ignimission.com



**Georges GAVELLE**  
Chief Executive Officer  
+33 6 12 24 68 99  
georges.gavelle@ignimission.com