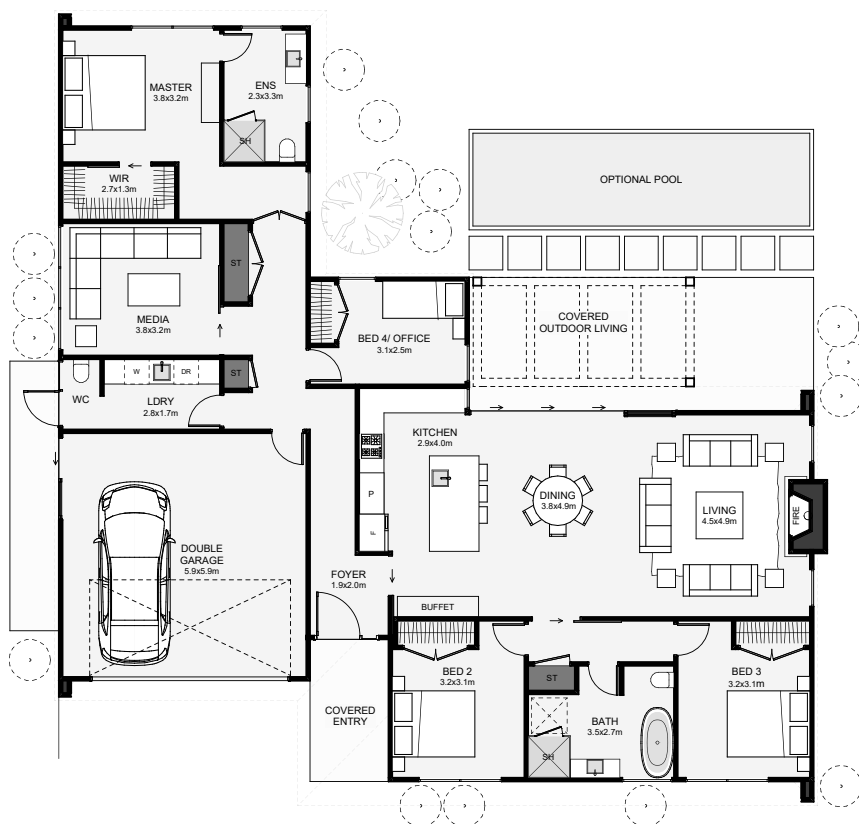




This L-shaped home breaks the master off from bedrooms and both living areas from being too close together. All bedrooms are positioned with a good amount of space from the main outdoor living, meaning swimming at night won't disrupt the kids!



Floor Area: 213m²

 2
  4
  2.5
  2

18.6m

19.1m

Contact us:

Ph: 027 424 8333

E: build@ashleyhomes.co.nz

www.ashleyhomes.co.nz

