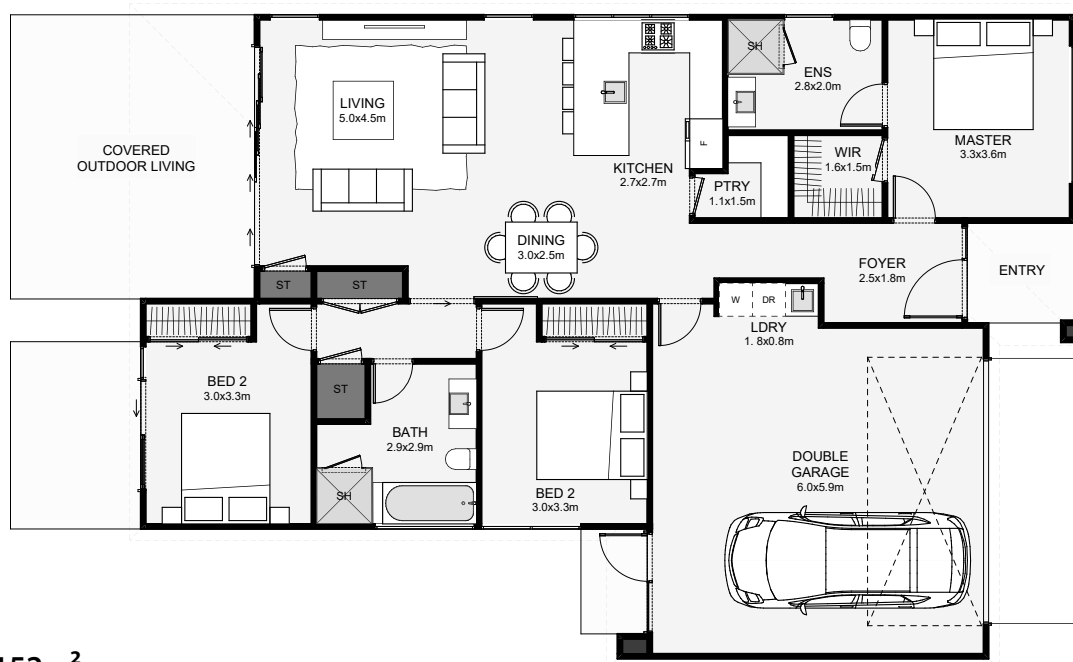




This three-bedroom home has bold styling. The main living inside is an open plan with large sliding doors opening out onto a covered outdoor living space. The master bedroom is positioned separate from other rooms and includes a walk-in wardrobe and ensuite. The kitchen includes a walk-in pantry. The double garage includes a countersunk laundry and access outside. If you are looking for a three-bedroom home with a strong presence, that's truly timeless, you've just found it!



Floor Area: 152m²

 2
  3
  2
  1
  16.9m
  11.7m

Contact us:

Ph: 027 424 8333

E: build@ashleyhomes.co.nz

www.ashleyhomes.co.nz

