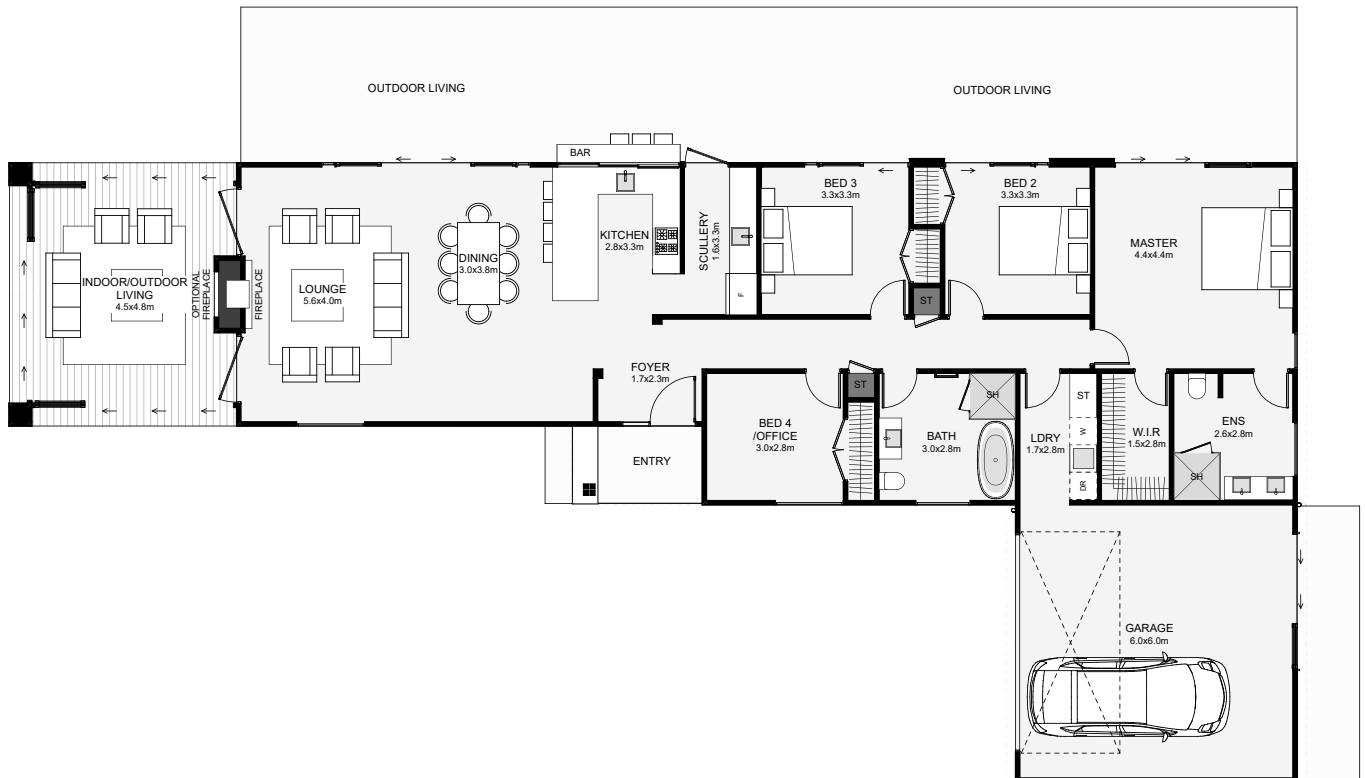




Add timeless style to your section, whether you're urban or have a lifestyle section with an outlook! One prominent feature of this home is the indoor/outdoor room which allows glass doors on all three sides to open up and make the room feel like you're outside while enjoying both cover and the warmth of the optional fireplace. Other options include the outdoor bar and the cedar/stone exterior cladding. More affordable options can also be used. This home is designed to take full advantage of expansive views and give you that homely feel that doesn't date with time!



Floor Area: 217m<sup>2</sup>

 2  
  4  
  2  
  2  
  28.3m  
  13.6m

Contact us:

Ph: 027 424 8333

E: [build@ashleyhomes.co.nz](mailto:build@ashleyhomes.co.nz)

[www.ashleyhomes.co.nz](http://www.ashleyhomes.co.nz)

