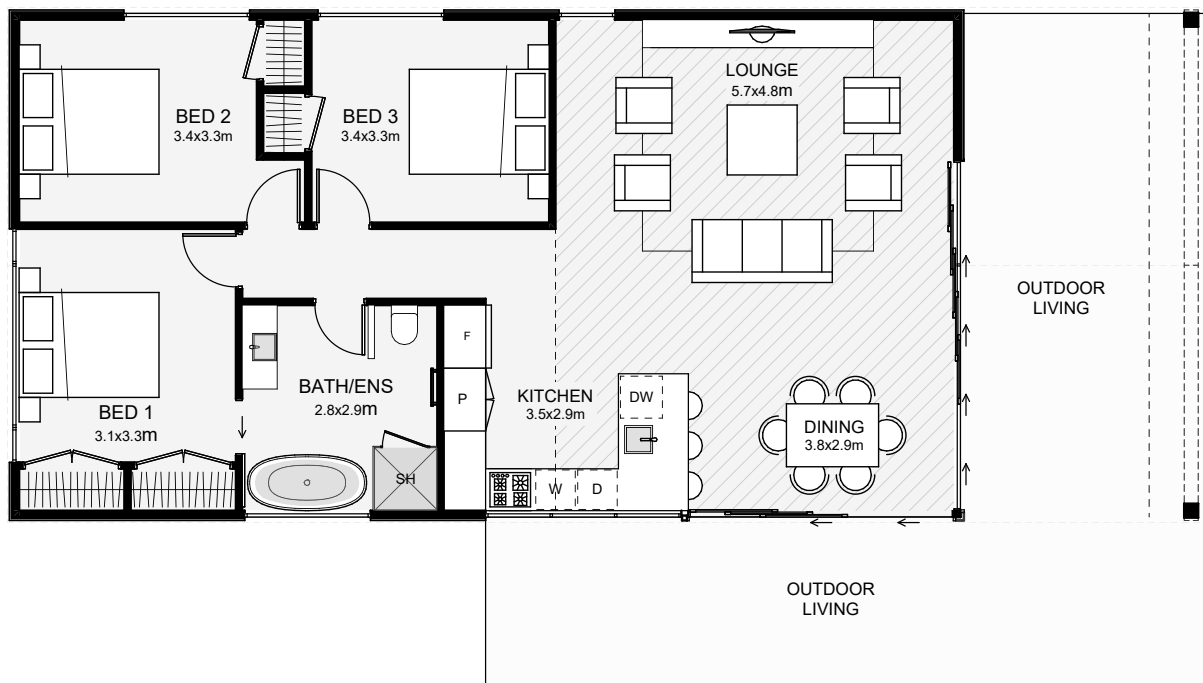




This transportable home is timeless in style with its board and batten exterior and the classic gable roof ends. Inside, there are three bedrooms, a bathroom that doubles as an ensuite, a good sized kitchen and a wide lounge. If you want a transportable home that won't date with time and is big enough to entertain inside, this is it!



Floor Area: 98m<sup>2</sup>

 0
  3
  1
  1
  17.0m
  7.2m

Contact us:

Ph: 027 424 8333

E: [build@ashleyhomes.co.nz](mailto:build@ashleyhomes.co.nz)

[www.ashleyhomes.co.nz](http://www.ashleyhomes.co.nz)

