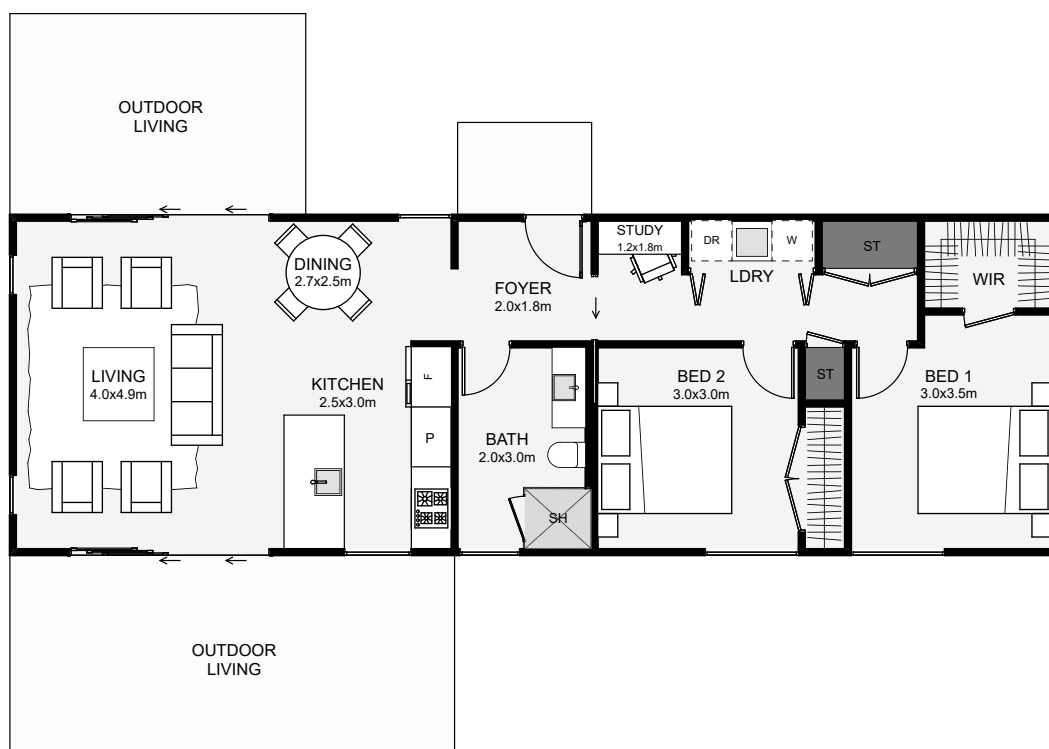




This contemporary home will maximise a broader northern outlook ideally. Inside, both bedrooms are away from the living. This dwelling also sports a study nook, proper storage and a walk-in wardrobe. The main living is designed around the sun-path, giving you the morning to evening sun.



Floor Area: 79m²

 0
  2
  1
  1
  15.6m
  5.1m

Contact us:

Ph: 027 424 8333

E: build@ashleyhomes.co.nz

www.ashleyhomes.co.nz

