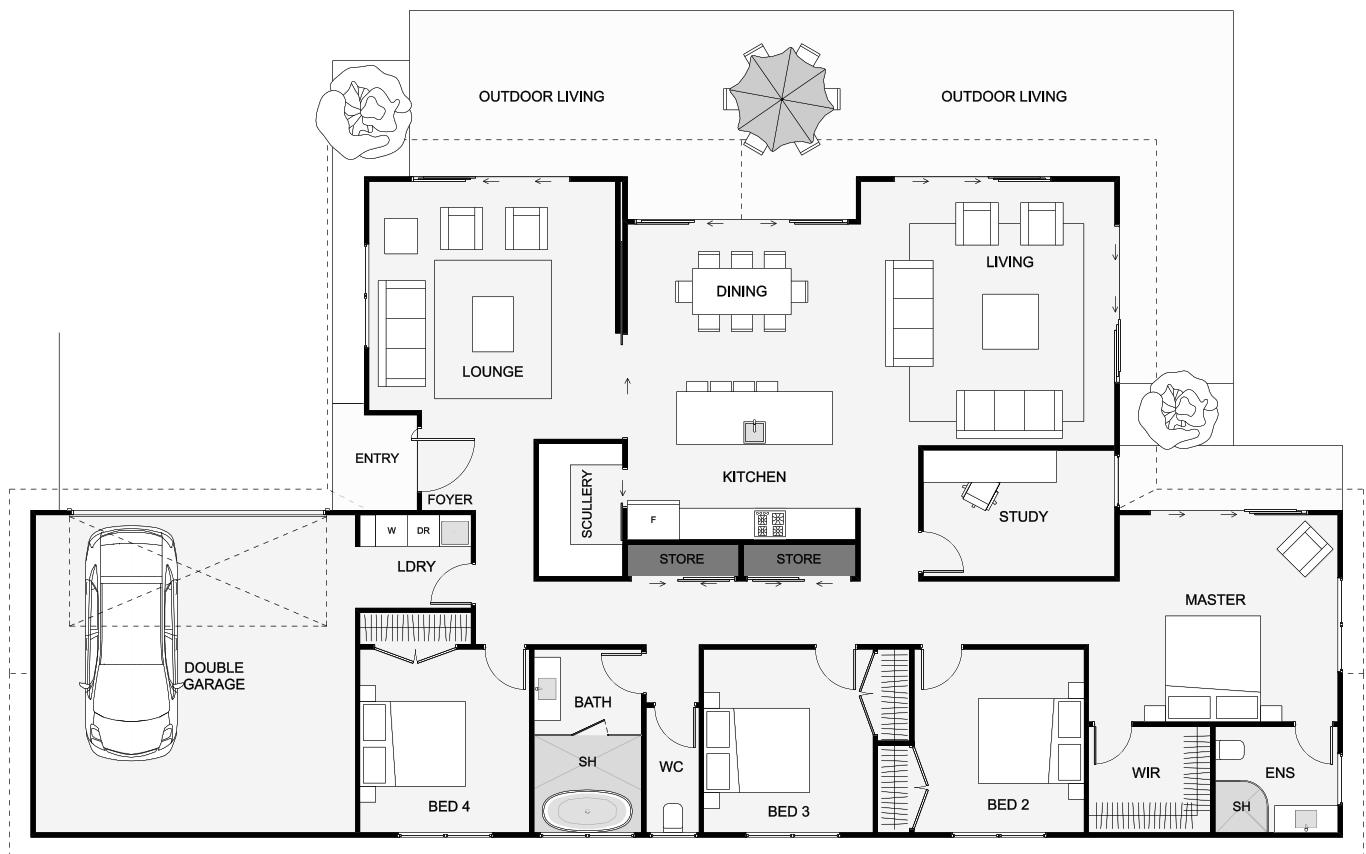




Superbly designed, this four bedroom home will impress both inside and out. A spacious kitchen including scullery leads into an open living area with an extra high ceiling space and high northern glazing. This is an innovative family home that offers ample space with generously proportioned bedrooms, a master bedroom with a walk-in wardrobe and ensuite which complete this clever design.



Floor Area: 238m²

 2
  4+
  2
  2
  24.8m
  12.5m

Contact us:

Ph: 027 424 8333

E: build@ashleyhomes.co.nz

www.ashleyhomes.co.nz

