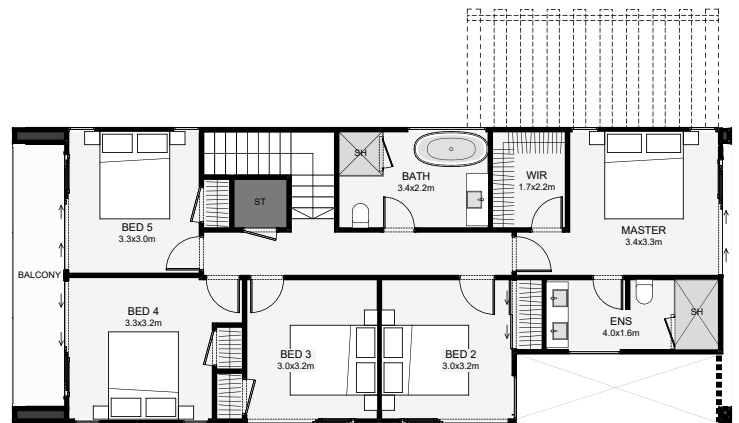
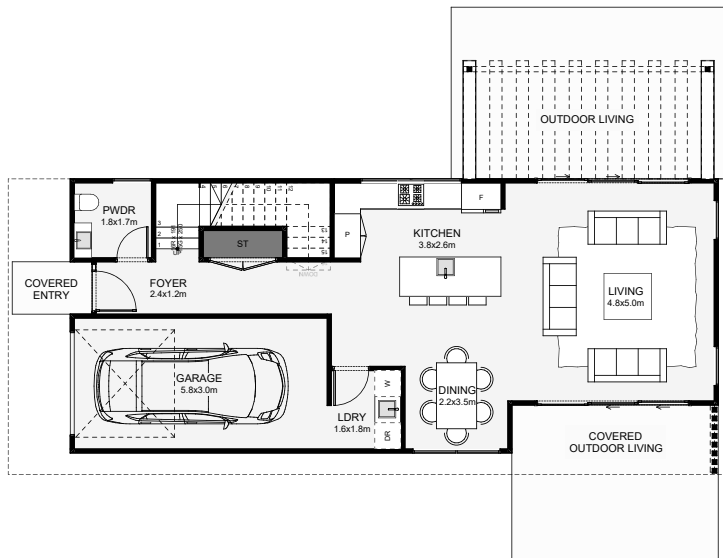




Maximise your narrow property with this modern-gable, five-bedroom home. Designed with multiple layout options in-mind. (eg. The fourth and fifth bedrooms can convert into a second living space). Downstairs the living is designed around full day sun with dual outdoor living spaces and an optional covered outdoor pergola. Build a magazine-worthy architectural home on your property without starting your new-home design from scratch.



Floor Area: 182m²

 1
  5
  2
  1
  16.5m
  6.8m

Contact us:

Ph: 027 424 8333

E: build@ashleyhomes.co.nz

www.ashleyhomes.co.nz

