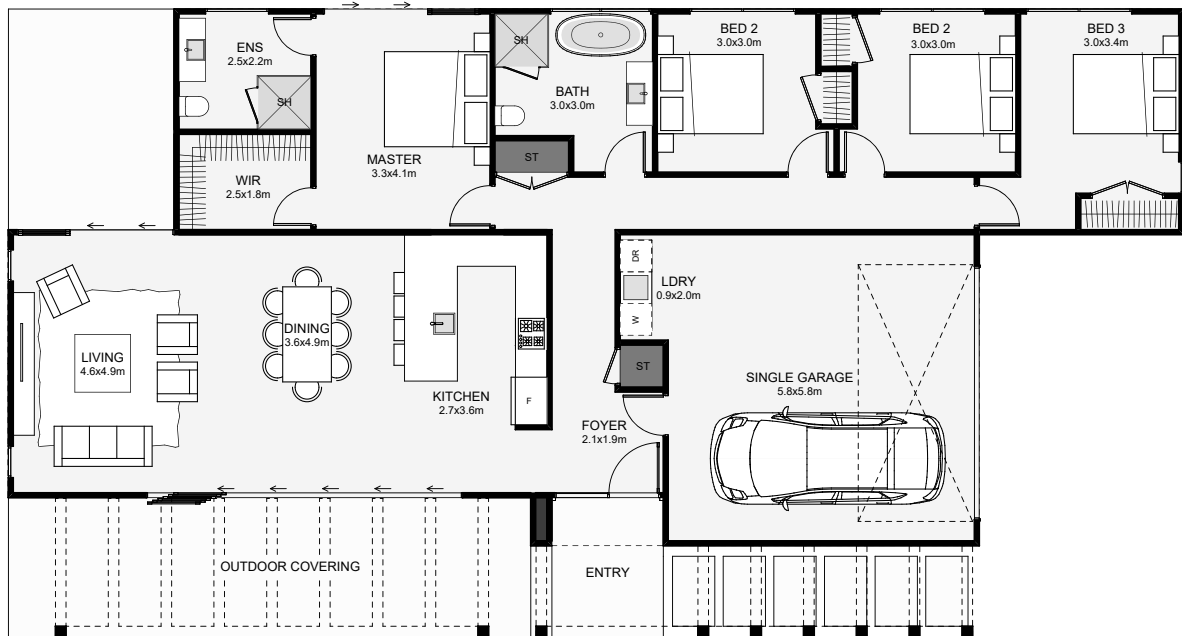




Great for narrow sections, this home makes good use of space. Inside the main living is open plan with exterior doors leading to two outdoor living spaces, (one morning sun, the other mid-day to afternoon). All bedrooms are positioned for morning sun including the ensuite and main bathroom. The exterior pergolas allow for optional cover if needed. If you're after a four-bedroom home and you like a traditional gable roof with modern styling, this could be it!



Floor Area: 179m²

 2
  4
  2
  1
  22.3m
  11.9m

Contact us:

Ph: 027 424 8333

E: build@ashleyhomes.co.nz

www.ashleyhomes.co.nz

