

Package Price:
\$1,297,500



Rouse Hill

Land Register: June 2023

Sapphire Estate

Lot: 2105 - pc10

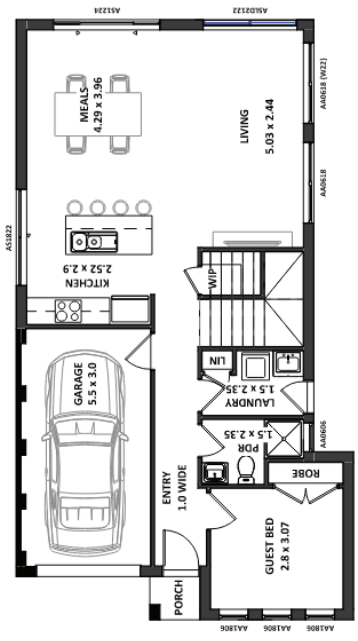
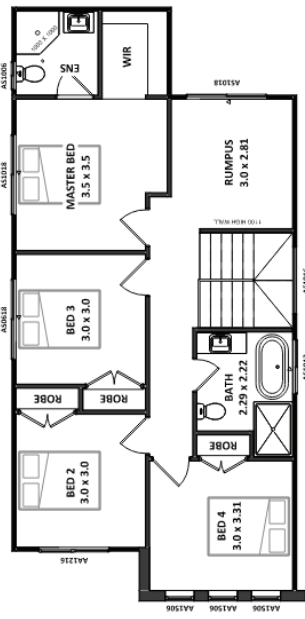
Eaton M19 II

5 3 1

Land: 280m² House: 177m² Lot Width: 10.0m Land Price: \$880,000

YOUR NEW HOME INCLUDES:

- FREE Ducted Air
- European Appliances Included
- Fixed Site Costs
- Fixed Authority Costs
- Fixed Piering
- Fixed Drop Edge Beams
- Fixed BASIX
- H Class Slab
- Remote Garage
- No Hidden Costs
- 2700 HIGH Ceilings*
- LED downlights
- Floor Coverings inc. Porch & Alfresco
- Colour Concrete Driveway
- Turf, Letterbox & Clothesline*
- Stone Benchtop to your Kitchen



Floorplan not to scale. Furnishing for illustration purposes only. All drawings and images are for illustrative purposes only and should be used as a guide only, Vogue Homes reserves the right to revise the plans and specifications without notice or obligation. All designs are subject to design panel and codes, council and authority approvals and formal builder quotation. Areas are approximate. These inclusions exclude duplexes. All offers are not available with any other offer(s) unless specified. Where an item is required to be upgraded or substituted due to site specific requirements of an Authority, including but not limited to compliance with matters such as hydraulics, bushfire BAL rating, and/or acoustic requirements extra charges may apply. Images in Vogue Homes brochures may depict fixtures, finishes, and features not supplied by Vogue Homes or included in the Price including but not limited to retaining walls, landscaping, driveways and pathways, pergola, barbeque, decorator items, feature wall, decorator screen and shelving, water features, fencing, swimming pools, decks, fixtures, and letter boxes. All internal and external decor items are excluded. Refer to specifications for full details. Vogue Homes reserves the right to change or remove any of the included items, specifications, and suppliers at its discretion, without notice and without client's approval. Ducted Air unit is suitable for the selected home. Products shown are subject to home designs. The initial fee non-refundable is required to secure your brand-new home and land package. This fee is applied against your home price. If you are paying the developer direct, then the transaction is direct between yourself and the developer. The purchaser(s) agree to sign both House & Land agreements and land sale contract within 10 working days after documents are issued. Should this proposed sale be refused by the builder / land developer, the initial fee will be refunded to purchaser. Please note that you will only be able to exchange on the land when you sign the building agreement and pay the balance of the preliminary works fees as agreed. If you choose not to proceed with purchasing your package, then no refund will be issued. If you are dealing with the developer direct for the land, then please refer to the developer and their T&Cs. Please note that the land developer may or may not refund their portion of the fees. Vogue Homes is not responsible for the developer's decision.

AWARD WINNING BUILDER



FINALIST 2018
HIA NSW Region Display Home
above \$500,001



FINALIST 2019
HIA NSW Region Kitchen
in a Display Home



FINALIST 2019
HIA NSW Region Medium Kitchen
10sq-20sq



FINALIST 2019
HIA NSW Region Bathroom
in a Display Home



WINNER 2019
HIA NSW Region Bathroom
in a Display Home



FINALIST 2020
HIA NSW Region Spec Home



Ducted Air Conditioning



Step by Step
Guidance



Energy Efficient
Homes



180 Days
Maintenance Period



Progress
Update



Qualified Interior
Designers



30 Year Structural
Warranty*



Flexible
Designs

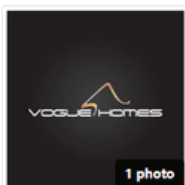


Quality
Incursions



Turn Key Fixed
Price*

5/5 ON PRODUCTREVIEW.COM.AU



Vogue Homes

www.vogue-homes.com.au

★★★★★ 5.0 from 43 reviews - [View Statistics](#)

Reviews

Sort by: **Newest**

5.0

★★★★★
43 reviews

5★ (41)
4★ (2)
3★ (0)
2★ (0)
1★ (0)

Build Stage
• Pre-Construction (19)
• Mid-Construction (4)
• Post-Construction (18)

Customer Service
●●●●● 4.9 (36)
Site Admin
●●●●● 4.9 (24)
Timeliness
●●●●● 4.8 (29)

Structural Integrity
●●●●● 4.9 (17)
Plumbing & Waterproofing
●●●●● 4.8 (17)
Electrical & Lighting
●●●●● 4.8 (16)
Flooring
●●●●● 5.0 (16)
Transparency
●●●●● 4.8 (29)